



# ROCKY MOUNTAIN ELEVATOR PRODUCTS

LIVE LIFE ELEVATED

## ELEVATIONS RESIDENTIAL ELEVATOR TRANSCEND SERIES



2025

MAROON BELLS, ASPEN COLORADO.

ELEVATORS FOR THE DISTINCTIVE HOME



## LIGHTING

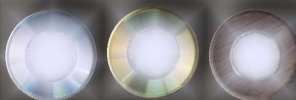


STANDARD 4" LED LIGHTS

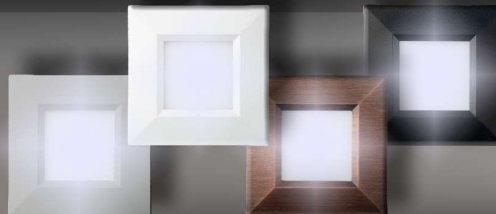
- UPGRADE YOUR INTERIOR WITH LIGHTING ACCENTS. CHOOSE FROM A VARIETY OF LOW POWER WHITE LED'S WITH ADJUSTABLE TEMPERATURE.
- STANDARD 4" LED LIGHTS AVAILABLE IN BLACK, WHITE, GOLD, BRONZE AND STAINLESS.



STAINLESS BRASS DARK WOOD



1" HIGH OUTPUT DOT LIGHTS



SILVER, WHITE, BRONZE, BLACK  
4" LED LIGHTS



CUSTOMERS CAN SUPPLY LIGHTS TO MATCH YOUR HOME  
FOR MORE INFORMATION ON THIS PLEASE CONTACT RMEP DIRECTLY.

ROCKY MOUNTAIN  
ELEVATOR PRODUCTS  
LIVE LIFE ELEVATED



## STANDRED DOOR LOCKS



\* MATCHING INSTALL KIT INCLUDED



\*STANDRED IS WHITE,  
AVAILABLE IN BLACK AND STAINLESS

## SMARTLOCK GL

THE SMARTLOCK GL IS THE ONLY LOCK THAT MOUNTS IN FRAMELESS GLASS. THE PULL HANDLES ARE INTEGRATED, INCREASING THE SHEAR GLASS LOOK.

THE CALL BUTTON IS INCORPORATED IN THE LOCK MAKING THIS A UNIQUE DESIGN THAT MOUNTS COMPLETELY IN THE GLASS JAMB.



\*SMARTLOCK GL  
AVAILABLE IN  
A STAINLESS STEEL, BLACK  
AND OIL RUBBED BRONZE  
FINISH.

\* SHOWN IN STAINLESS STEEL

DESIGNED TO MEET THE NEWEST SAFETY STANDARDS, THE STEEL CONSTRUCTION WILL WITHSTAND YEARS OF USE AND STILL LOOK GREAT. NO PLASTIC USED IN THE FRAME OR COVER TO BECOME FADED OR BRITTLE.



## TWO AND THREE SPEED GATES



- TWO AND THREE SPEED GATES.
- MOST SIZES AVAILABLE IN FIRE RATED IF REQUIRED.
- STAINLESS STEEL IS STANDARD, CUSTOMIZABLE ON REQUEST.





## GATE OPTIONS

### TELESCOPIC CAR GATE

#### SAFE & SECURE

- MINIMIZES SPACE BETWEEN HOISTWAY AND DOOR, REDUCING THE RISK OF CHILD ENTRAPMENT.
- RIGID PANELS ELIMINATE BOWING THAT IS COMMON WITH ACCORDION GATES.
- GATE SITS FLUSH WITH FRONT OF CAR.

#### CUSTOMIZABLE

- MULTIPLE STANDARD LAMINATES AND NATURAL WOOD PANELS AVAILABLE.
- HIDDEN HARDWARE MAINTAINS SLEEK FRAME DESIGN.
- PANELS CAN BE CUSTOMIZED TO MATCH YOUR HOME DECOR.
- CUSTOM R.A.L. COLORS AVAILABLE.
- CHOOSE BETWEEN AUTOMATIC OR MANUAL OPERATION.

CLEAR

BLACK

BRASS\*

H4 STAINLESS\*



\*UPGRADED FINISH



ROCKY MOUNTAIN  
ELEVATOR PRODUCTS  
LIVE LIFE ELEVATED





# CEILINGS



- BASIC CABS ARE INSTALLED WITH STANDARD TWO LIGHT FLAT PANEL CEILINGS.
- PANELS ARE RAW TO BE STAINED WITH YOUR HOME.
- WROUGHT IRON DESIGN CAN BE SUPPLIED BY CUSTOMER TO MATCH HOME ACCESSORIES.

STANDARD FLAT PANEL  
WITH 4 LIGHTS



FOUR TRAY WITH  
CROWN MOLDING



## BUILDER SERIES CEILINGS

UPGRADE YOUR STANDARD CAB DESIGN WITH AN UPGRADE CEILING FROM OUR BUILDER SERIES CATALOG.

CHOOSE TO UPGRADE TO 4 LIGHTS (TWO ARE STANDARD) AND THEN PICK A STYLE TO MATCH YOUR CAB AND

CUSTOM WROUGHT IRON  
(MAY VARY, YOU CAN SUPPLY)



SINGLE TRAY WITH  
STANDARD TWO LIGHTS



CUSTOMIZE YOUR CEILING WITH YOUR CUSTOMIZED CAB. RECESSED PUCK LIGHTS, WIRE MESH, AND GLASS ARE SOME OF THE OPTIONS YOU CAN HAVE.

MESH\*



GLASS\*



\*SHOWN AS EXAMPLES, DESIGN YOUR CABS CEILING YOUR WAY TO FIT YOUR STYLE AND HOME.





AVAILABLE IN HALF AND FULL WALL

- RMEP OFFERS A VARIATY OF INLAY PANELS; GLASS, ACRYLIC, MIRROR, FAUX WROUGHT IRON, WIRE MESH, AND COPPERLEAF.
- A HALF WALL INLAY WITH A RAISED WOOD PANEL AND GLASS OR MESH CREATES A CLASSIC LOOK.
- FAUX WROUGHT IRON PANELS ADD AMBIANCE TO YOUR HOME. CUSTOMIZABLE DESIGNS CAN FEATURE YOUR FAMILY CREST, COMPANY LOGO OR SIMPLE LINE ART IMAGES. WROUGHT IRON PANELS ARE SET IN CLEAR OR FROSTED GLASS.

AVAILABLE IN MANY DIFFERENT  
COLORS AND STYLES

\*CLEAR OR FROSTED GLASS





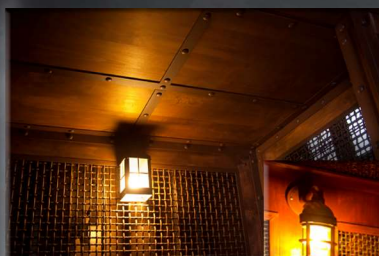
## GALLERY

WHEN IT'S ALL ABOUT THE VIEW.

GLASS CABS ARE THE TOP OF THE INDUSTRY FOR CLASS AND STYLE. WHY HIDE AN ELEVATOR WHEN IT CAN BECOME AN IMPORTANT PART OF YOUR HOME DESIGN? MIX GLASS AND WOOD FOR A WINDOW FRAME EFFECT AND CREATE A VERY STYLISH CAB.



CABS CAN BE DESIGNED TO MATCH YOUR HOME AND PERSONAL STYLE. EVERY UNIQUE CAB IS DESIGNED TO FIT PROPERLY IN YOUR HOISTWAY, HANDCRAFTED FOR A UNIQUE QUALITY LOOK & FEEL.



ROCKY MOUNTAIN ELEVATOR PRODUCTS  
LIVE LIFE EL

ROCKY MOUNTAIN ELEVATOR PRODUCTS





TRANSCEND CAN PROVIDE 3D DESIGN, TAKING YOU FROM CONCEPT TO REALITY:

WHETHER YOU ARE LOOKING FOR THE BASIC CAB OFFERINGS OF OUR BUILDER SERIES OR THAT ONE OF A KIND CUSTOM CAB FROM OUR TRANSCEND SERIES, RMEP CAN TAKE CARE OF YOU. RMEP OFFERS MORE CUSTOM OPTIONS THAN ANY OTHER MANUFACTURER IN THE INDUSTRY.

FROM 3D CONCEPT



TO REALITY!

AT ROCKY MOUNTAIN ELEVATOR PRODUCTS LLC, IT IS OUR MISSION TO IMPROVE SAFETY AND CUSTOMER EXPERIENCE BY PROVIDING A SUPERIOR LEVEL OF DESIGN AND INNOVATION. WE ASPIRE TO CREATE AN INDUSTRY-WIDE CHANGE BY SETTING A HIGHER LEVEL OF EXCELLENCE AND ALWAYS EXCEEDING CUSTOMER EXPECTATIONS.

RMEP DESIGNS A FULLY CODE COMPLAINTANT ELEVATOR PER THE ASME ANSI A17.1(2016) NATIONAL SAFETY CODE FOR ELEVATORS- SECTION 5.3 PRIVATE RESIDENCES ELEVATORS AS MODIFIED BY VARIOUS STATES.

5.3.7.2 OF THE ABOVE REFERENCED CODE: CLEARANCE BETWEEN THE HOIST-WAY DOORS OR GATES AND THE LANDINGS SILLS AND CAR DOORS OR GATES EFFECTIVE MAY 2016.

CLEARANCE REQUIREMENTS WITHIN A PRIVATE RESIDENCE STATE: THE CLEARANCE BETWEEN THE HOIST-WAY DOORS OR GATES AND THE HOIST-WAY FACE OF THE LANDING DOOR OR GATE AND THE CAR DOOR OR GATE SHALL NOT EXCEED  $\frac{3}{4}$ " (0.75 INCHES). THE DISTANCE BETWEEN THE HOIST-WAY FACE OF THE LANDING DOOR OR GATE AND THE CAR DOOR OR GATE SHALL NOT EXCEED 4" (INCHES).

ROCKY MOUNTAIN ELEVATOR PRODUCTS TAKES PRIDE IN BEING THE SAFETY LEADER WITH DEVELOPING SAFER SYSTEMS HAS BEEN THE MAIN FOCUS OF RMEP SINCE ITS FOUNDING.



NO OTHER COMPANIES PRODUCTS MATCH THE QUALITY, FUNCTION AND SAFETY THAT RMEP PROVIDES. THE ABILITY TO CUSTOMIZE THE PRODUCTS TO THE LOOK OF YOUR HOME IS SECONDARY TO SAFETY BUT IMPORTANT TO RMEP. THE ABILITY TO CUSTOMIZE THESE PRODUCTS TO YOUR HOMES STYLE HAS CHANGED THE HOME ELEVATOR FROM BEING HIDDEN AS A CLOSET TO BEING A CELEBRATED FIXTURE IN YOUR HOME AS MUCH AS A WELL DECORATED LIVING ROOM.

CHECK OUT THESE CODE COMPLIANT PRODUCTS IN THE NEXT FEW PAGES.

OLDER CODE COMPLIANT SYSTEMS ALLOWED FOR A SIGNIFICANT GAP THAT ALLOWED FOR ENTRAPMENT IN SOME SITUATIONS.



# HARDWOOD

SHAKER



RED OAK CLEAR\*

RAISED PANEL



WHITE OAK GOLDEN\*\*

RECESSED PANEL



RED OAK AMERICAN\*\*\*

- \*STANDARD TWO LIGHT SHOWN
- \*\*SINGLE TRAY TWO LIGHT OPTION
- \*\*\*FOUR TRAY FOUR LIGHT OPTION

NOTHING BEATS HARDWOOD IN BEAUTY, QUALITY AND DURABILITY.

UPGRADE TO HARDWOOD AND HAVE THE SAME DURABILITY AND BEAUTY THAT YOU HAVE PUT INTO YOUR HOME. THREE STYLES THAT REFLECT WHERE YOU LIVE AND HOW YOU LIVE:

\*SHAKER; SIMPLE AND BEAUTIFUL; FLAT HARD WOOD PANELS FRAMED WITH HARDWOOD BOARDS IN THE STYLE OF THE EARLY PIONEERS.

\*RAISED; THE CLASSIC LOOK OF RAISED PANELS CALL BACK TO THE ORNATE AND LUXURIOUS VICTORIAN ERA.

\*RECESSED; THE DISTINCTIVE CROWN MOULDING FRAMES THE BEAUTIFUL BEVELED NATURAL WOOD GRAINED PANELS.

ALL OF OUR CABS ARE HANDMADE FROM RAW LUMBER AND ARE ASSEMBLED AND FINISHED AT THE FACTORY BEFORE BEING DIS-ASSEMBLED FOR SHIPPING TO ENSURE FIT AND FINISH.

## WOOD CHOICES



\*OTHER WOODS AVAILIBE ON REQUEST

\*\*SEE BUILDER'S BROCHER FOR LAMINATE OPTIONS



CHOOSE FROM THE SAME SELECTIONS AVAILABLE FOR CAB  
FINISH AND HARDWARE.

## LAMINATES



## MESH AND ACRYLIC

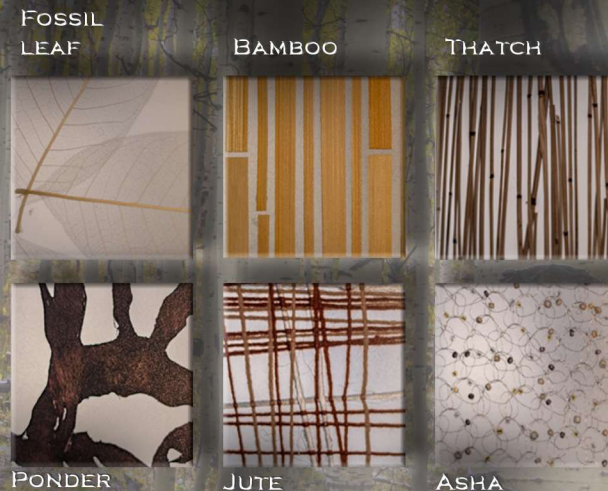


## VENEERS AND HARDWOODS



## DESIGNER INLAYED ACRYLIC

AVAILABLE IN SANDSTONE AND PATINA FINISHES.



## PREMIER PANELS

\* UPGRADED ITEM  
AVAILABLE IN THE HARDWOOD AND  
LAMINATE SELECTIONS.





## FIXTURES

STANDER CAR OPERATING PANNEL  
CAN COME WITH A POSITION INDICATOR  
(PI) OR WITHOUT. AVAILIBE IN STAINLESS,  
BLACK,BRASS, AND OIL RUBBED BRONZE.

CUSTOM CAR OPERATOR PANELS  
(COP), CAN BE ETCHED WITH  
YOUR OWN DESIGN, CUSTOM  
COLOR TO MATCH YOUR HOUSE.

LIMIT THE USE OR ACCESS TO FLOORS  
WITH DIGITAL AND PHYSICAL KEYS. AVAIL-  
ABLE IN BRASS OR STAINLESS FINISH.  
(KEYPAD AVAILABLE IN STAINLESS ONLY)



COP STYLES; STANDARD,  
GOTHIC, VICTORIAN, VINTAGE,  
AND ROUNDED.

HALL CALLS COME STD  
WITH SINGLE CALLBUTTON  
OTHER OPTIONS ARE AVAILBEL



HALL POSITION INDICATOR  
SHOWS WHAT FLOOR THE CAB  
IS AT IN A GLANCE ON THE HALL  
STATION.



# HANDRAILS

- STYLES AND COLORS TO MATCH OR ACCENT YOUR HOME ELEVATOR.
- FLAT HARDWOOD HANDRAILS ARE AVAILABLE IN THE SAME SELECTION OF HARDWOOD AS YOUR CAB.
- FLAT HANDRAILS ARE ALSO AVAILABLE IN BRUSHED STAINLESS STEEL, BLACK, BRUSHED BRASS AND OIL-RUBBED BRONZE.
- ROUND METAL HANDRAIL AVAILABLE IN BRUSHED STAINLESS STEEL, BLACK, BRUSHED BRASS AND OIL-RUBBED BRONZE.



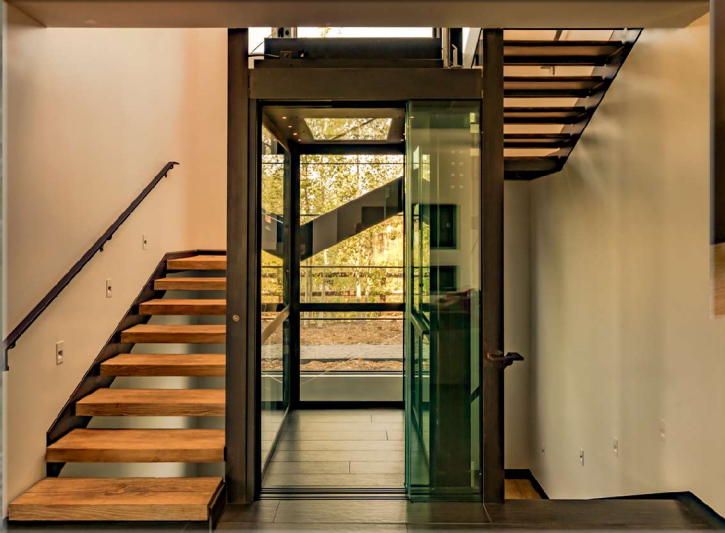
UNFINISHED HANDLE





ROCKY MOUNTAIN  
ELEVATOR

PRODUCTS  
LIVE LIFE ELEVATED



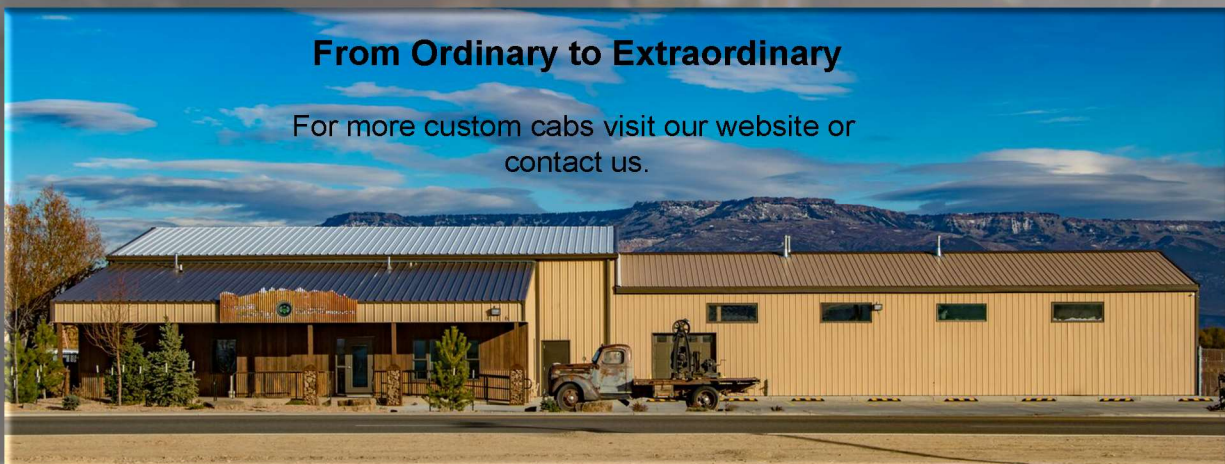


WHO ARE WE?

SURROUNDED BY THE SCENIC HIGH DESERTS AND SCENIC MOUNTAINS OF WESTERN COLORADO, ROCKY MOUNTAIN ELEVATOR PRODUCTS IS A SMALL COMPANY STRIVING TO MAKE BIG CHANGES IN THE HOME ELEVATOR INDUSTRY. WITH INNOVATIONS SUCH AS EASY TO ASSEMBLE CAB DESIGN AND A FOCUS ON SAFETY WITH EASE OF SERVICE AND TROUBLESHOOTING. WE PROVIDE THE CUSTOM DESIGNS YOU WANT WHILE ALSO STRIVING TO MAKE AFFORDABLE OPTIONS THAT HAVE THE LOOK OF HIGH END CUSTOM DESIGNS.

### From Ordinary to Extraordinary

For more custom cabs visit our website or contact us.



ROCKY MOUNTAIN ELEVATOR PRODUCTS HEADQUARTERS. GRAND JUNCTION, COLORADO

LET OUR TRANSCEND BROCHURE INSPIRE THE POSSIBILITIES OF YOUR CUSTOM CAB DESIGN.



ROCKY MOUNTAIN  
ELEVATOR PRODUCTS

LIVE LIFE ELEVATED